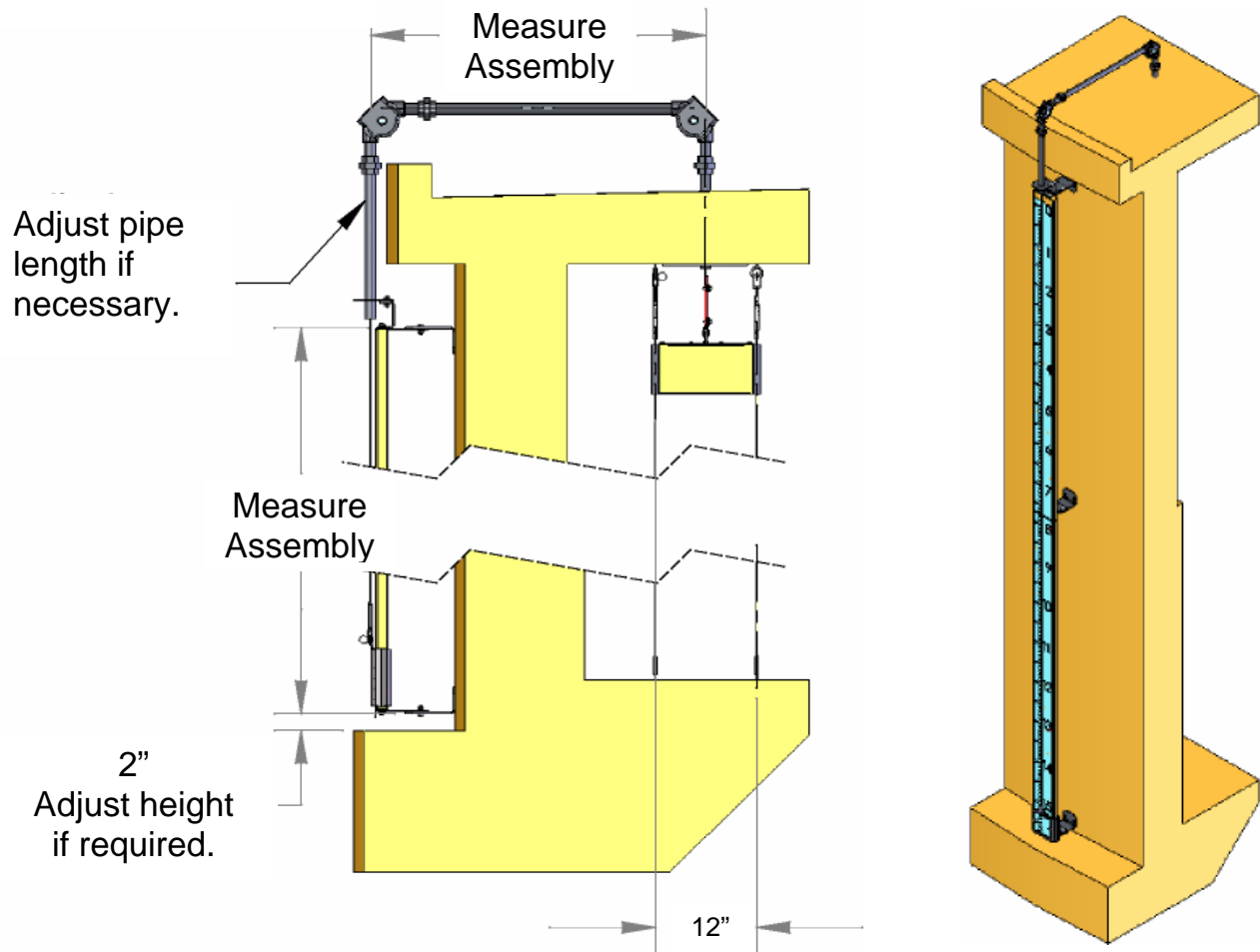




TankIndicator.com

VS-A020

Installation Instructions



Simple-Reliable-Cost Effective



VERSA-STEEL INC.

1618 NE First Avenue, Portland, OR 97232
Toll Free (800) 678-0814 Phone (503) 287-9822
Fax (800) 287-7483 www.versasteel.com
Bernie@versasteel.com

Installation Instructions:

- 1) Measure reeving assembly and set plumb lines for inside cable anchors and outside ruler mounting brackets.
- 2) Mark ruler bracket hole locations and mount ruler. Leave horizontal slot bolts loose.
- 3) Remove ceiling bracket and pipe from reeving assembly and mount bracket to ceiling. Seal pipe in roof hole for water tight connection.
- 4) Install reeving assembly and indicator cable thru reeving assembly. Temporarily clamp indicator at zero mark at top of ruler.
- 5) Assemble guide cables to ceiling bracket and assemble thru tubes of float, leaving float box raised off floor.
- 6) Drill and install hilti flush drop in anchors type 303 SS pn hdi#00336430 two places on floor for inside guide cables.
- 7) Connect guide cables and tighten and set float box on floor. Connect indicator cable to float box on floor and remove slack.
- 8) Unclamp cable indicator and raise and lower float box and check for free motion of indicator and float box. Make necessary adjustments and tighten all brackets and hardware.

Simple-Reliable-Cost Effective



VERSA-STEEL INC.

1618 NE First Avenue, Portland, OR 97232

Toll Free (800) 678-0814 Phone (503) 287-9822

Fax (800) 287-7483 www.versasteel.com

Bernie@versasteel.com